

Eastern
CRIME STATISTICS
2001/2002



A Summary of
Recorded and Resolved Offence
and Incident Statistics
August 2002

Summary of Recorded and Resolved Crime by Category

Years ended 30 June

Crime Category	Offence Class Code	Recorded 1999/2000	Recorded 2000/2001	Recorded 2001/2002	Percent Variance 99/00 to 00/01	Percent Variance 00/01 to 01/02	Resolved 1999/2000	Resolved 2000/2001	Resolved 2001/2002	Percent Resolved 1999/2000	Percent Resolved 2000/2001	Percent Resolved 2001/2002
VIOLENCE	HOMICIDE	9	7	8	-22.2	14.3	9	7	8	100.0	100.0	100.0
	KIDNAPPING AND ABDUCTION	18	11	13	-38.9	18.2	14	8	4	77.8	72.7	30.8
	ROBBERY	87	69	89	-20.7	29.0	36	26	39	41.4	37.7	43.8
	GRIEVOUS ASSAULTS	147	152	146	3.4	-3.9	120	133	119	81.6	87.5	81.5
	SERIOUS ASSAULTS	793	817	728	3.0	-10.9	628	672	634	79.2	82.3	87.1
	MINOR ASSAULTS	847	899	961	6.1	6.9	677	722	771	79.9	80.3	80.2
	INTIMIDATION/THREATS	411	486	524	18.2	7.8	353	407	451	85.9	83.7	86.1
	GROUP ASSEMBLIES	3	13	23	333.3	76.9	1	9	20	33.3	69.2	87.0
VIOLENCE	Total	2315	2454	2492	6.0	1.5	1838	1984	2046	79.4	80.8	82.1

SEXUAL OFFENCES	SEXUAL AFFRONTS	18	25	23	38.9	-8.0	9	16	14	50.0	64.0	60.9
	IMMORAL BEHAVIOUR	1			-100.0		0			0.0		
	SEXUAL ATTACKS	132	155	260	17.4	67.7	59	94	201	44.7	60.6	77.3
	ABNORMAL SEX	2	1		-50.0	-100.0	0	0		0.0	0.0	
	IMMORAL BEHAVIOUR	11	19	23	72.7	21.1	7	14	20	63.6	73.7	87.0
	IMMORAL BEHAVIOUR/MISCELLANEOUS	1	4	3	300.0	-25.0	0	3	0	0.0	75.0	0.0
SEXUAL OFFENCES	Total	165	204	309	23.6	51.5	75	127	235	45.5	62.3	76.1

DRUGS AND ANTI SOCIAL	DRUGS (NOT CANNABIS)	56	57	78	1.8	36.8	49	50	67	87.5	87.7	85.9
	DRUGS(CANNABIS ONLY)	1515	1378	1543	-9.0	12.0	1353	1254	1413	89.3	91.0	91.6
	GAMING		1			-100.0		0			0.0	
	DISORDER	1202	1510	1465	25.6	-3.0	1095	1393	1350	91.1	92.3	92.2
	VAGRANCY OFFENCES	5	17	11	240.0	-35.3	5	16	10	100.0	94.1	90.9
	FAMILY OFFENCES	26	22	18	-15.4	-18.2	15	14	12	57.7	63.6	66.7
	FAMILY OFFENCES CONTINUED	397	438	342	10.3	-21.9	343	359	288	86.4	82.0	84.2
	SALE OF LIQUOR ACT 1989	70	32	56	-54.3	75.0	68	32	44	97.1	100.0	78.6
DRUGS AND ANTI SOCIAL	Total	3271	3455	3513	5.6	1.7	2928	3118	3184	89.5	90.2	90.6

Summary of Recorded and Resolved Crime by Category

Years ended 30 June

Crime Category	Offence Class Code	Recorded 1999/2000	Recorded 2000/2001	Recorded 2001/2002	Percent Variance 99/00 to 00/01	Percent Variance 00/01 to 01/02	Resolved 1999/2000	Resolved 2000/2001	Resolved 2001/2002	Percent Resolved 1999/2000	Percent Resolved 2000/2001	Percent Resolved 2001/2002	
DISHONESTY	BURGLARY	4100	3531	3533	2999	0.1	-15.1	608	644	601	17.2	18.2	20.0
	CAR CONVERSION ETC	4200	2615	2532	2269	-3.2	-10.4	455	576	563	17.4	22.7	24.8
	THEFT	4300	7277	7102	7018	-2.4	-1.2	1822	1776	1796	25.0	25.0	25.6
	RECEIVING	4400	159	153	170	-3.8	11.1	148	147	163	93.1	96.1	95.9
	FRAUD	4500	782	648	719	-17.1	11.0	435	397	443	55.6	61.3	61.6
DISHONESTY	Total	14364	13968	13175	-2.8	-5.7	3468	3540	3566	24.1	25.3	27.1	
PROPERTY DAMAGE	DESTRUCTION OF PROPERTY	5100	2140	2413	2605	12.8	8.0	602	795	850	28.1	32.9	32.6
	ENDANGERING	5200	2	9	13	350.0	44.4	1	8	9	50.0	88.9	69.2
PROPERTY DAMAGE	Total	2142	2422	2618	13.1	8.1	603	803	859	28.2	33.2	32.8	
PROPERTY ABUSES	TRESPASS	6100	655	691	696	5.5	0.7	502	546	550	76.6	79.0	79.0
	LITTERING	6200	21	22	22	4.8	0.0	16	17	15	76.2	77.3	68.2
	ANIMALS	6300	108	51	88	-52.8	72.5	77	32	64	71.3	62.7	72.7
	POSTAL/RAIL/FIRE SERVICE ABUSES	6500	291	269	295	-7.6	9.7	146	132	151	50.2	49.1	51.2
	ARMS ACT OFFENCES	6800	155	192	207	23.9	7.8	125	166	186	80.6	86.5	89.9
PROPERTY ABUSES	Total	1230	1225	1308	-0.4	6.8	866	893	966	70.4	72.9	73.9	
ADMINISTRATIVE	AGAINST JUSTICE	7100	745	876	1019	17.6	16.3	583	691	815	78.3	78.9	80.0
	BIRTHS/DEATHS AND MARRIAGES	7200			1					1			100.0
	IMMIGRATION	7300	2	1		-50.0	-100.0	1	0		50.0	0.0	
	AGAINST NATIONAL INTEREST	7500	1			-100.0		1			100.0		
	BY - LAWS BREACHES	7600	24	42	111	75.0	164.3	10	31	98	41.7	73.8	88.3
ADMINISTRATIVE	Total	772	919	1131	19.0	23.1	595	722	914	77.1	78.6	80.8	
	Grand Total	24259	24647	24546	1.6	-0.4	10373	11187	11770	42.8	45.4	48.0	

Recorded Crime rate (offences per 10,000 Population), by Crime Category

Years ended 30 June

Recorded offences per 10,000 population

Crime Category		Offence Class Code	1999/2000	2000/2001	2001/2002
VIOLENCE	HOMICIDE	1100	0.5	0.4	0.4
	KIDNAPPING AND ABDUCTION	1200	0.9	0.6	0.7
	ROBBERY	1300	4.5	3.6	4.6
	GRIEVOUS ASSAULTS	1400	7.7	7.9	7.5
	SERIOUS ASSAULTS	1500	41.4	42.4	37.5
	MINOR ASSAULTS	1600	44.2	46.6	49.6
	INTIMIDATION/THREATS	1700	21.4	25.2	27.0
	GROUP ASSEMBLIES	1800	0.2	0.7	1.2
VIOLENCE		Total	120.8	127.3	128.5
SEXUAL OFFENCES	SEXUAL AFFRONTS	2200	0.9	1.3	1.2
	IMMORAL BEHAVIOUR	2400	0.1		
	SEXUAL ATTACKS	2600	6.9	8.0	13.4
	ABNORMAL SEX	2700	0.1	0.1	
	IMMORAL BEHAVIOUR	2800	0.6	1.0	1.2
	IMMORAL BEHAVIOUR/MISCELLANEOUS	2900	0.1	0.2	0.2
SEXUAL OFFENCES		Total	8.6	10.6	15.9
DRUGS AND ANTI SOCIAL OFFENCES	DRUGS (NOT CANNABIS)	3100	2.9	3.0	4.0
	DRUGS(CANNABIS ONLY)	3200	79.1	71.5	79.6
	GAMING	3400		0.1	
	DISORDER	3500	62.7	78.3	75.6
	VAGRANCY OFFENCES	3600	0.3	0.9	0.6
	FAMILY OFFENCES	3700	1.4	1.1	0.9
	FAMILY OFFENCES CONTINUED	3800	20.7	22.7	17.6
	SALE OF LIQUOR ACT 1989	3900	3.7	1.7	2.9
DRUGS AND ANTI SOCIAL OFFENCES		Total	170.7	179.2	181.2

Recorded Crime rate (offences per 10,000 Population), by Crime Category

Years ended 30 June

Recorded offences per 10,000 population

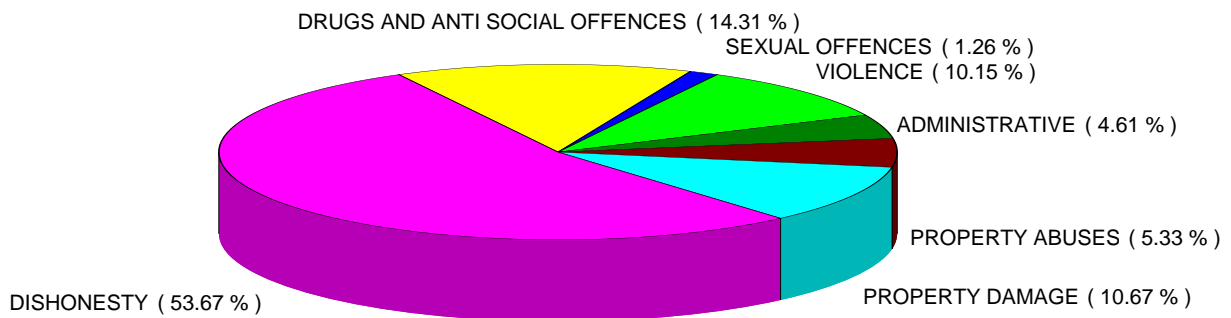
Crime Category		Offence Class Code	1999/2000	2000/2001	2001/2002
DISHONESTY	BURGLARY	4100	184.3	183.3	154.7
	CAR CONVERSION ETC	4200	136.5	131.4	117.0
	THEFT	4300	379.7	368.4	362.0
	RECEIVING	4400	8.3	7.9	8.8
	FRAUD	4500	40.8	33.6	37.1
DISHONESTY		Total	749.5	724.6	679.6
PROPERTY DAMAGE	DESTRUCTION OF PROPERTY	5100	111.7	125.2	134.4
	ENDANGERING	5200	0.1	0.5	0.7
PROPERTY DAMAGE		Total	111.8	125.7	135.0
PROPERTY ABUSES	TRESPASS	6100	34.2	35.8	35.9
	LITTERING	6200	1.1	1.1	1.1
	ANIMALS	6300	5.6	2.6	4.5
	POSTAL/RAIL/FIRE SERVICE ABUSES	6500	15.2	14.0	15.2
	ARMS ACT OFFENCES	6800	8.1	10.0	10.7
PROPERTY ABUSES		Total	64.2	63.6	67.5
ADMINISTRATIVE	AGAINST JUSTICE	7100	38.9	45.4	52.6
	BIRTHS/DEATHS AND MARRIAGES	7200			0.1
	IMMIGRATION	7300	0.1	0.1	
	AGAINST NATIONAL INTEREST	7500	0.1		
	BY - LAWS BREACHES	7600	1.3	2.2	5.7
ADMINISTRATIVE		Total	40.3	47.7	58.3
		Grand Total	1265.9	1278.7	1266.1

Proportion of Total Recorded Crime by Offence Category

Years ended 30 June

Offence Category	1999/2000	2000/2001	2001/2002
VIOLENCE	9.54 %	9.96 %	10.15 %
SEXUAL OFFENCES	0.68 %	0.83 %	1.26 %
DRUGS AND ANTI SOCIAL	13.48 %	14.02 %	14.31 %
DISHONESTY	59.21 %	56.67 %	53.67 %
PROPERTY DAMAGE	8.83 %	9.83 %	10.67 %
PROPERTY ABUSES	5.07 %	4.97 %	5.33 %
ADMINISTRATIVE	3.18 %	3.73 %	4.61 %
Total	100.00%	100.00%	100.00%

**Total Offences by Category
2001/2002 Fiscal Year**



Summary of Recorded and Resolved Crime by Area

Years ended 30 June

TOTAL RECORDED CRIME

Area Description	Recorded 1999/2000	Recorded 2000/2001	Recorded 2001/2002	Percent Variance 99/00 to 00/01	Percent Variance 00/01 to 01/02	Resolved 1999/2000	Resolved 2000/2001	Resolved 2001/2002	Percent Resolved 1999/2000	Percent Resolved 2000/2001	Percent Resolved 2001/2002
Gisborne	6953	7058	7447	1.5	5.5	2925	3343	3781	42.1	47.4	50.8
Hastings	8980	9564	9215	6.5	-3.6	3823	4251	4542	42.6	44.4	49.3
Napier	8326	8025	7884	-3.6	-1.8	3625	3593	3447	43.5	44.8	43.7
	24259	24647	24546	1.6	-0.4	10373	11187	11770	42.8	45.4	48.0

Summary of Recorded and Resolved Crime by Area

Years ended 30 June

VIOLENCE (1000 series offences)

Area Description	Recorded 1999/2000	Recorded 2000/2001	Recorded 2001/2002	Percent Variance 99/00 to 00/01	Percent Variance 00/01 to 01/02	Resolved 1999/2000	Resolved 2000/2001	Resolved 2001/2002	Percent Resolved 1999/2000	Percent Resolved 2000/2001	Percent Resolved 2001/2002
Gisborne	614	708	689	15.3	-2.7	500	603	579	81.4	85.2	84.0
Hastings	862	938	988	8.8	5.3	658	756	842	76.3	80.6	85.2
Napier	839	808	815	-3.7	0.9	680	625	625	81.0	77.4	76.7
	2315	2454	2492	6.0	1.5	1838	1984	2046	79.4	80.8	82.1

Summary of Recorded and Resolved Crime by Area

Years ended 30 June

SEXUAL OFFENCES (2000 series offences)

Area Description	Recorded 1999/2000	Recorded 2000/2001	Recorded 2001/2002	Percent Variance 99/00 to 00/01	Percent Variance 00/01 to 01/02	Resolved 1999/2000	Resolved 2000/2001	Resolved 2001/2002	Percent Resolved 1999/2000	Percent Resolved 2000/2001	Percent Resolved 2001/2002
Gisborne	42	60	40	42.9	-33.3	21	39	28	50.0	65.0	70.0
Hastings	66	85	215	28.8	152.9	27	55	179	40.9	64.7	83.3
Napier	57	59	54	3.5	-8.5	27	33	28	47.4	55.9	51.9
	165	204	309	23.6	51.5	75	127	235	45.5	62.3	76.1

Summary of Recorded and Resolved Crime by Area

Years ended 30 June

DRUGS AND ANTI SOCIAL OFFENCES

(3000 series offences)

Area Description	Recorded 1999/2000	Recorded 2000/2001	Recorded 2001/2002	Percent Variance 99/00 to 00/01	Percent Variance 00/01 to 01/02	Resolved 1999/2000	Resolved 2000/2001	Resolved 2001/2002	Percent Resolved 1999/2000	Percent Resolved 2000/2001	Percent Resolved 2001/2002
Gisborne	1028	1164	1364	13.2	17.2	874	1024	1221	85.0	88.0	89.5
Hastings	1023	1195	1092	16.8	-8.6	929	1111	1020	90.8	93.0	93.4
Napier	1220	1096	1057	-10.2	-3.6	1125	983	943	92.2	89.7	89.2
	3271	3455	3513	5.6	1.7	2928	3118	3184	89.5	90.2	90.6

Summary of Recorded and Resolved Crime by Area

Years ended 30 June

DISHONESTY (4000 series offences)

Area Description	Recorded 1999/2000	Recorded 2000/2001	Recorded 2001/2002	Percent Variance 99/00 to 00/01	Percent Variance 00/01 to 01/02	Resolved 1999/2000	Resolved 2000/2001	Resolved 2001/2002	Percent Resolved 1999/2000	Percent Resolved 2000/2001	Percent Resolved 2001/2002
Gisborne	4158	3778	3741	-9.1	-1.0	940	884	940	22.6	23.4	25.1
Hastings	5313	5495	5009	3.4	-8.8	1377	1391	1526	25.9	25.3	30.5
Napier	4893	4695	4425	-4.0	-5.8	1151	1265	1100	23.5	26.9	24.9
	14364	13968	13175	-2.8	-5.7	3468	3540	3566	24.1	25.3	27.1

Summary of Recorded and Resolved Crime by Area

Years ended 30 June

PROPERTY DAMAGE (5000 series offences)

Area Description	Recorded 1999/2000	Recorded 2000/2001	Recorded 2001/2002	Percent Variance 99/00 to 00/01	Percent Variance 00/01 to 01/02	Resolved 1999/2000	Resolved 2000/2001	Resolved 2001/2002	Percent Resolved 1999/2000	Percent Resolved 2000/2001	Percent Resolved 2001/2002
Gisborne	596	697	755	16.9	8.3	178	247	265	29.9	35.4	35.1
Hastings	851	996	939	17.0	-5.7	243	318	277	28.6	31.9	29.5
Napier	695	729	924	4.9	26.7	182	238	317	26.2	32.6	34.3
	2142	2422	2618	13.1	8.1	603	803	859	28.2	33.2	32.8

Summary of Recorded and Resolved Crime by Area

Years ended 30 June

PROPERTY ABUSES (6000 series offences)

Area Description	Recorded 1999/2000	Recorded 2000/2001	Recorded 2001/2002	Percent Variance 99/00 to 00/01	Percent Variance 00/01 to 01/02	Resolved 1999/2000	Resolved 2000/2001	Resolved 2001/2002	Percent Resolved 1999/2000	Percent Resolved 2000/2001	Percent Resolved 2001/2002
Gisborne	385	429	499	11.4	16.3	288	335	403	74.8	78.1	80.8
Hastings	481	415	461	-13.7	11.1	343	304	335	71.3	73.3	72.7
Napier	364	381	348	4.7	-8.7	235	254	228	64.6	66.7	65.5
	1230	1225	1308	-0.4	6.8	866	893	966	70.4	72.9	73.9

Summary of Recorded and Resolved Crime by Area

Years ended 30 June

ADMINISTRATIVE (7000 series offences)

Area Description	Recorded 1999/2000	Recorded 2000/2001	Recorded 2001/2002	Percent Variance 99/00 to 00/01	Percent Variance 00/01 to 01/02	Resolved 1999/2000	Resolved 2000/2001	Resolved 2001/2002	Percent Resolved 1999/2000	Percent Resolved 2000/2001	Percent Resolved 2001/2002
Gisborne	130	222	359	70.8	61.7	124	211	345	95.4	95.0	96.1
Hastings	384	440	511	14.6	16.1	246	316	363	64.1	71.8	71.0
Napier	258	257	261	-0.4	1.6	225	195	206	87.2	75.9	78.9
	772	919	1131	19.0	23.1	595	722	914	77.1	78.6	80.8

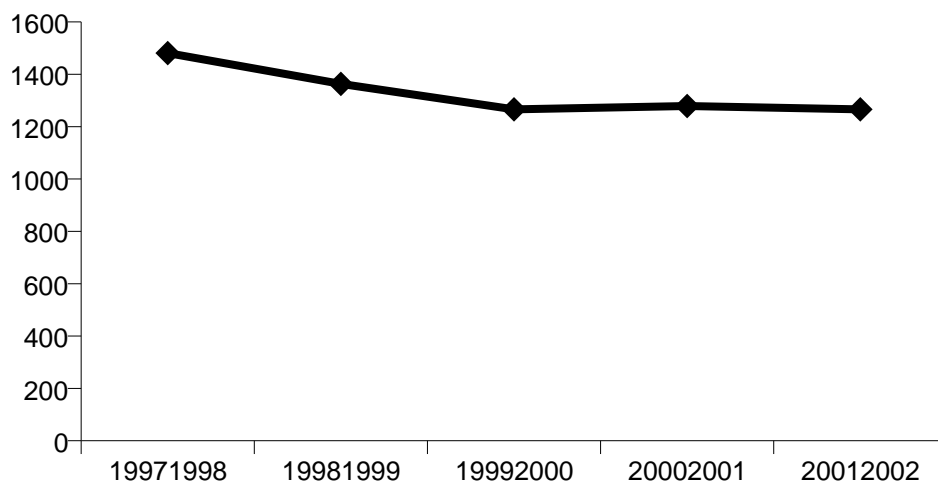
Recorded offences per 10,000 population and resolution rates

Years ended 30 June

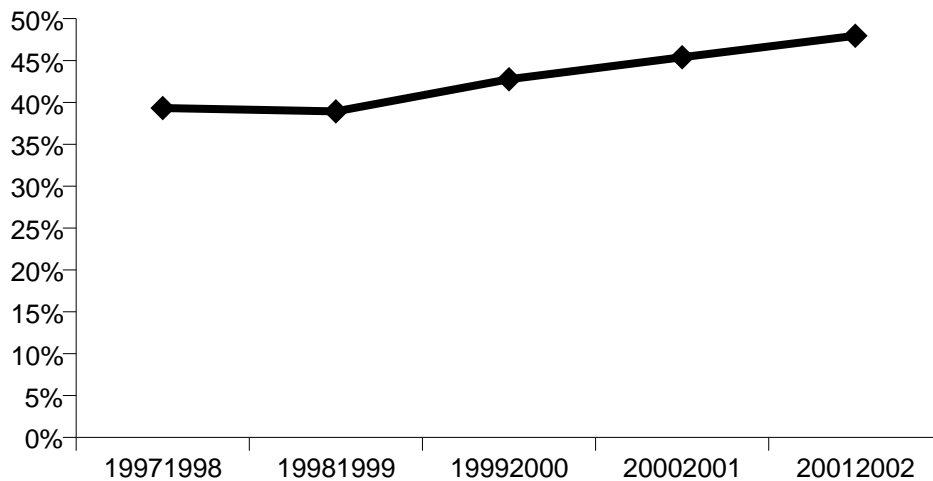
All offence categories

Fiscal year	Number of recorded offences	Annual percentage variation in recorded offences	Rate of recorded offences per 10,000 population	Annual percentage variation in rate of recorded offences per 10,000 population	Number of resolved offences	Resolution rate (percentage of offences resolved)	Annual percentage variation in resolution rate
1997/1998	28569		1481		11234	39.3 %	
1998/1999	26189	-8.3 %	1363	-7.9 %	10196	38.9 %	-1.0 %
1999/2000	24259	-7.4 %	1266	-7.2 %	10373	42.8 %	9.8 %
2000/2001	24647	1.6 %	1279	1.0 %	11187	45.4 %	6.1 %
2001/2002	24546	-0.4 %	1266	-1.0 %	11770	48.0 %	5.6 %

Recorded offences per 10,000 population



Resolution rate (percentage of recorded offences that are resolved)



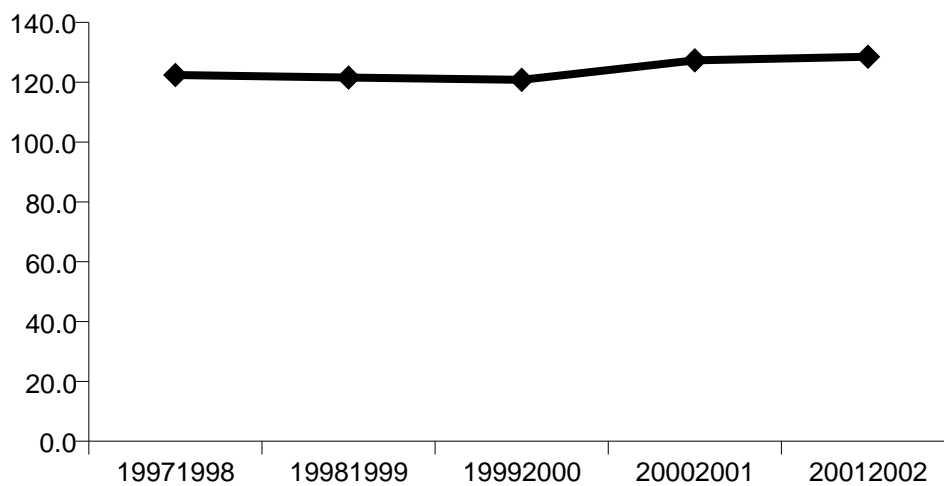
Recorded offences per 10,000 population and resolution rates

Years ended 30 June

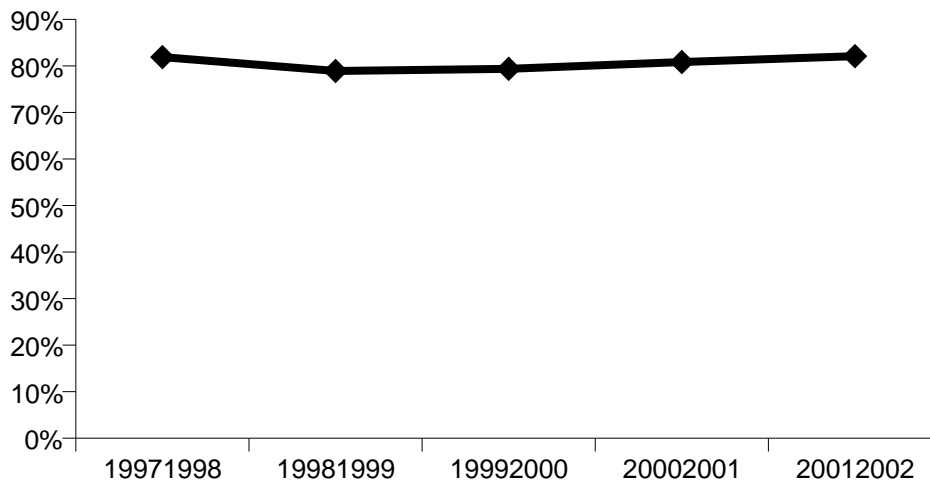
VIOLENCE (1000 series offences)

Fiscal year	Number of recorded offences	Annual percentage variation in recorded offences	Rate of recorded offences per 10,000 population	Annual percentage variation in rate of recorded offences per 10,000 population	Number of resolved offences	Resolution rate (percentage of offences resolved)	Annual percentage variation in resolution rate
1997/1998	2361		122		1934	81.9 %	
1998/1999	2335	-1.1 %	122	-0.7 %	1843	78.9 %	-3.6 %
1999/2000	2315	-0.9 %	121	-0.6 %	1838	79.4 %	0.6 %
2000/2001	2454	6.0 %	127	5.4 %	1984	80.8 %	1.8 %
2001/2002	2492	1.5 %	129	1.0 %	2046	82.1 %	1.6 %

Recorded offences per 10,000 population



Resolution rate
(percentage of recorded offences that are resolved)



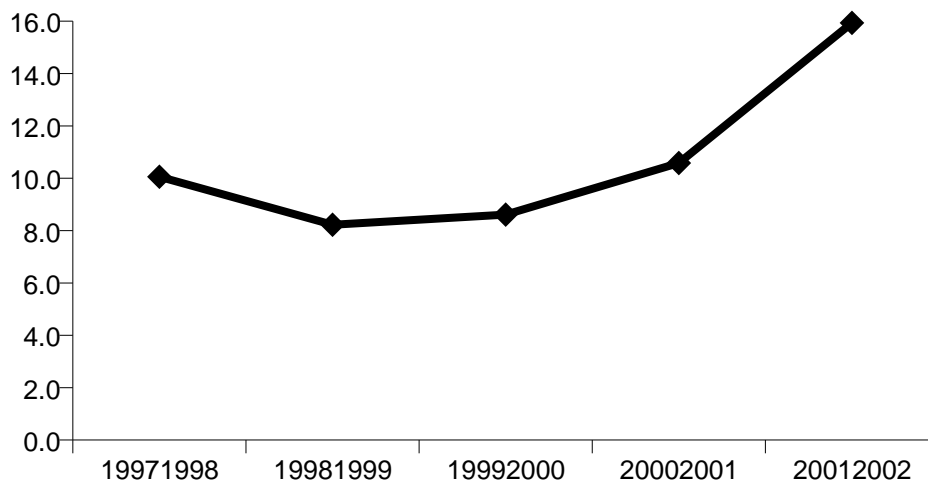
Recorded offences per 10,000 population and resolution rates

Years ended 30 June

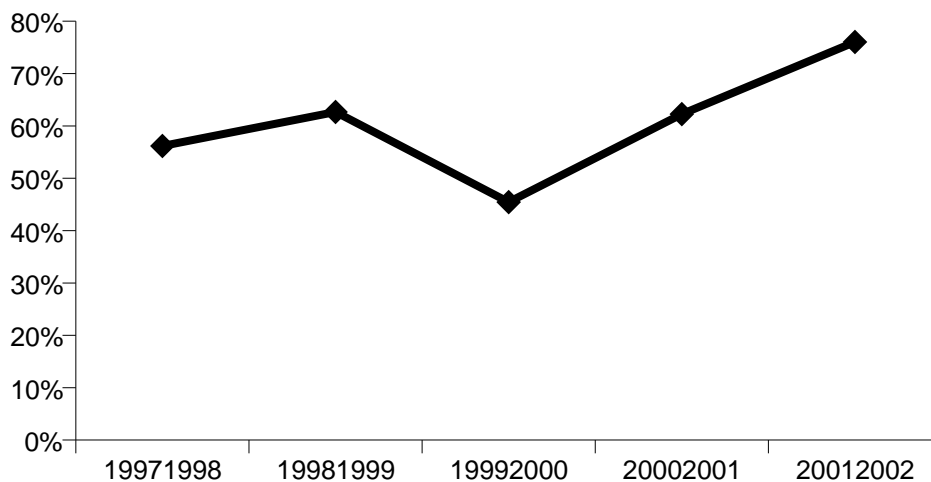
SEXUAL OFFENCES (2000 series offences)

Fiscal year	Number of recorded offences	Annual percentage variation in recorded offences	Rate of recorded offences per 10,000 population	Annual percentage variation in rate of recorded offences per 10,000 population	Number of resolved offences	Resolution rate (percentage of offences resolved)	Annual percentage variation in resolution rate
1997/1998	194		10		109	56.2 %	
1998/1999	158	-18.6 %	8	-18.2 %	99	62.7 %	11.5 %
1999/2000	165	4.4 %	9	4.7 %	75	45.5 %	-27.5 %
2000/2001	204	23.6 %	11	22.9 %	127	62.3 %	37.0 %
2001/2002	309	51.5 %	16	50.6 %	235	76.1 %	22.2 %

Recorded offences per 10,000 population



**Resolution rate
(percentage of recorded offences that are resolved)**



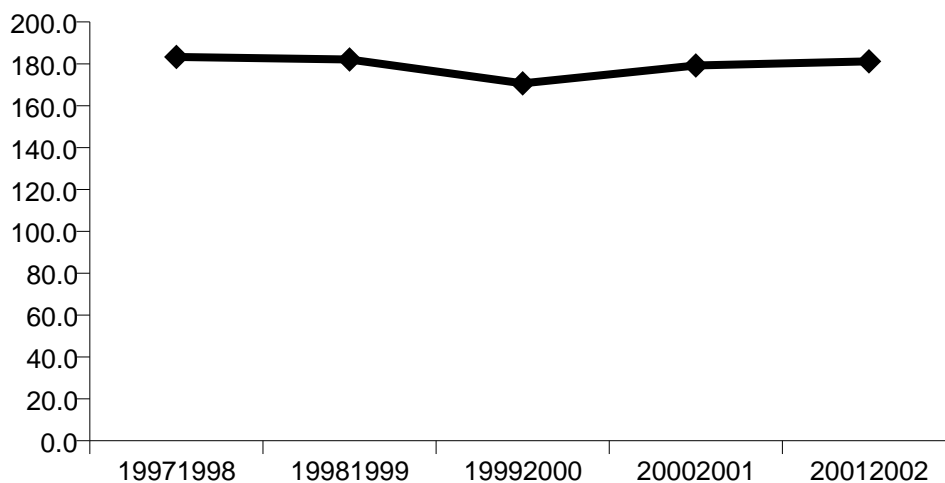
Recorded offences per 10,000 population and resolution rates

Years ended 30 June

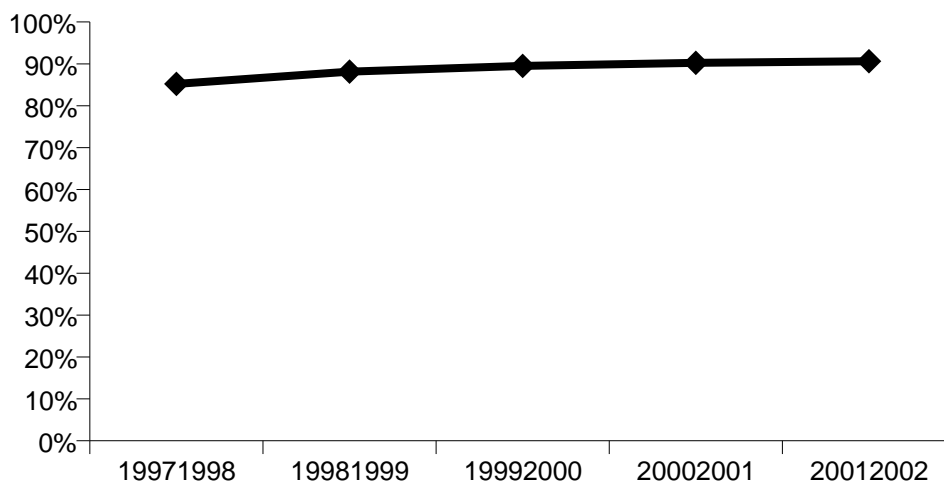
DRUGS AND ANTI SOCIAL OFFENCES (3000 series offences)

Fiscal year	Number of recorded offences	Annual percentage variation in recorded offences	Rate of recorded offences per 10,000 population	Annual percentage variation in rate of recorded offences per 10,000 population	Number of resolved offences	Resolution rate (percentage of offences resolved)	Annual percentage variation in resolution rate
1997/1998	3535		183		3012	85.2 %	
1998/1999	3498	-1.0 %	182	-0.6 %	3083	88.1 %	3.4 %
1999/2000	3271	-6.5 %	171	-6.3 %	2928	89.5 %	1.6 %
2000/2001	3455	5.6 %	179	5.0 %	3118	90.2 %	0.8 %
2001/2002	3513	1.7 %	181	1.1 %	3184	90.6 %	0.4 %

Recorded offences per 10,000 population



Resolution rate
(percentage of recorded offences that are resolved)



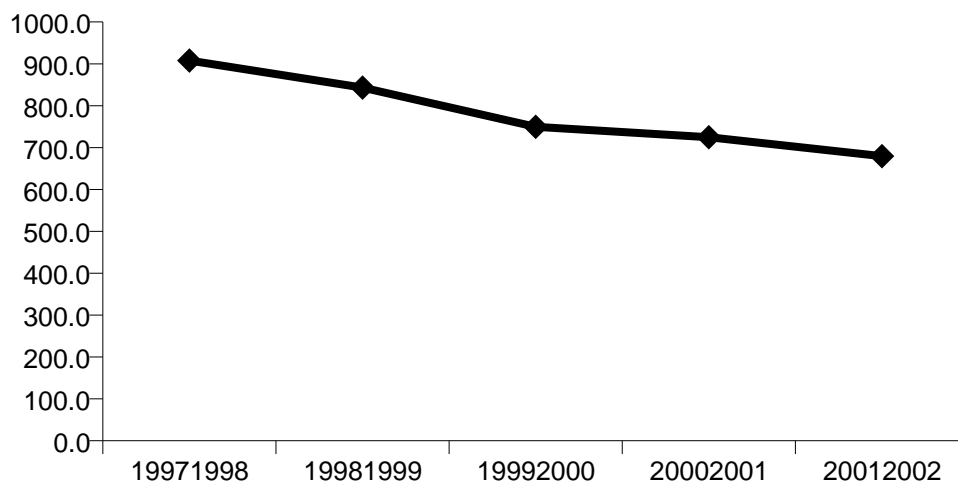
Recorded offences per 10,000 population and resolution rates

Years ended 30 June

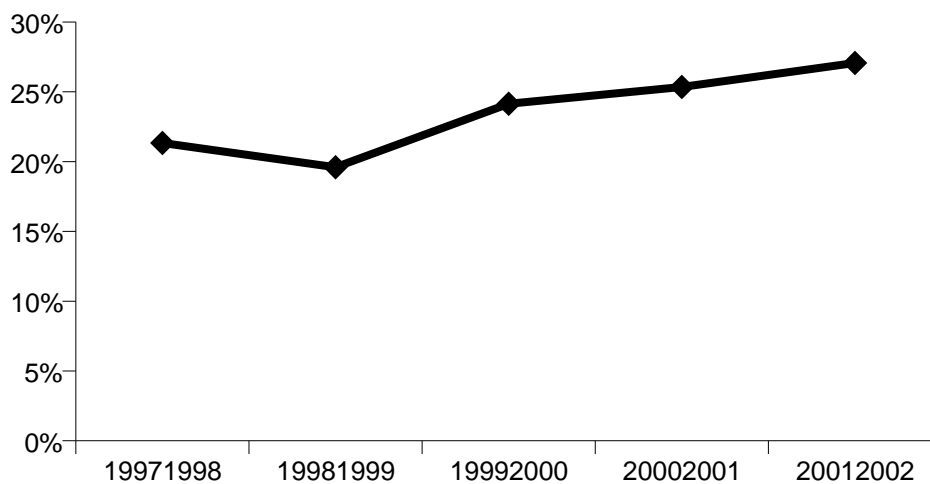
DISHONESTY (4000 series offences)

Fiscal year	Number of recorded offences	Annual percentage variation in recorded offences	Rate of recorded offences per 10,000 population	Annual percentage variation in rate of recorded offences per 10,000 population	Number of resolved offences	Resolution rate (percentage of offences resolved)	Annual percentage variation in resolution rate
1997/1998	17510		908		3736	21.3 %	
1998/1999	16194	-7.5 %	843	-7.1 %	3173	19.6 %	-8.2 %
1999/2000	14364	-11.3 %	750	-11.1 %	3468	24.1 %	23.2 %
2000/2001	13968	-2.8 %	725	-3.3 %	3540	25.3 %	5.0 %
2001/2002	13175	-5.7 %	680	-6.2 %	3566	27.1 %	6.8 %

Recorded offences per 10,000 population



Resolution rate
(percentage of recorded offences that are resolved)



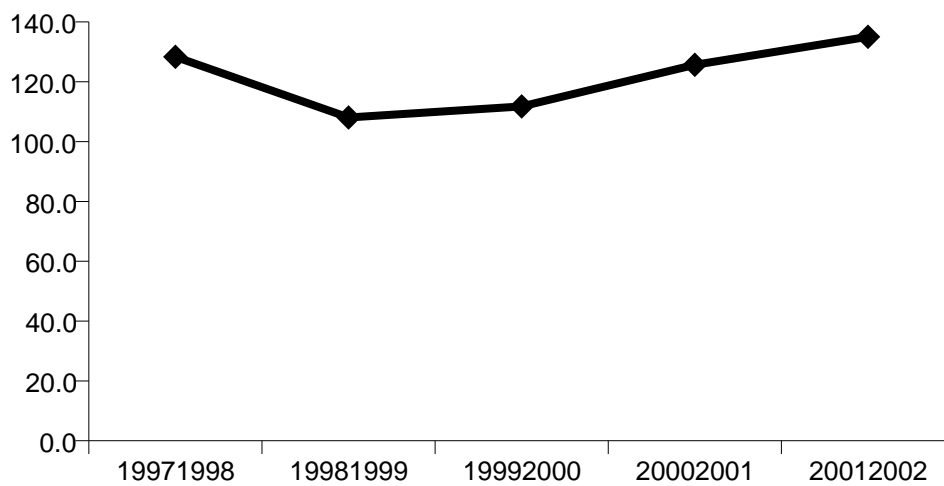
Recorded offences per 10,000 population and resolution rates

Years ended 30 June

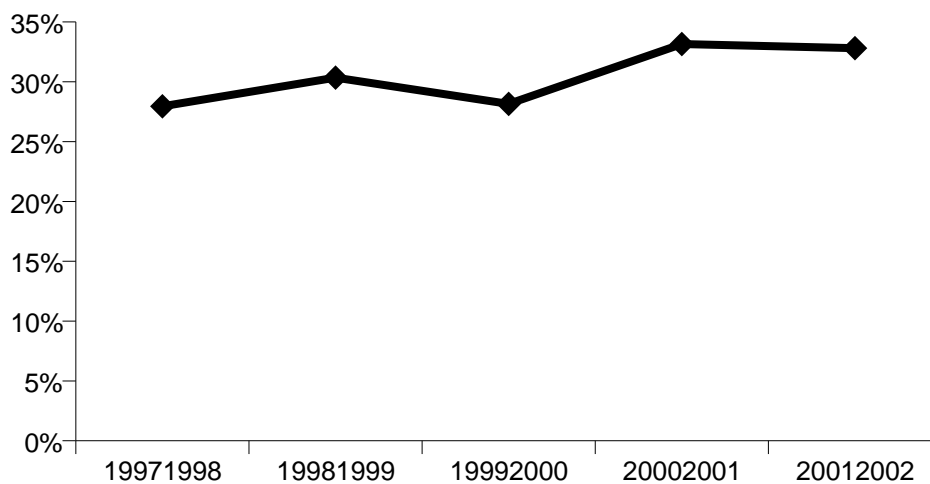
PROPERTY DAMAGE (5000 series offences)

Fiscal year	Number of recorded offences	Annual percentage variation in recorded offences	Rate of recorded offences per 10,000 population	Annual percentage variation in rate of recorded offences per 10,000 population	Number of resolved offences	Resolution rate (percentage of offences resolved)	Annual percentage variation in resolution rate
1997/1998	2476		128		692	27.9 %	
1998/1999	2076	-16.2 %	108	-15.8 %	630	30.3 %	8.6 %
1999/2000	2142	3.2 %	112	3.4 %	603	28.2 %	-7.2 %
2000/2001	2422	13.1 %	126	12.4 %	803	33.2 %	17.8 %
2001/2002	2618	8.1 %	135	7.5 %	859	32.8 %	-1.0 %

Recorded offences per 10,000 population



Resolution rate
(percentage of recorded offences that are resolved)



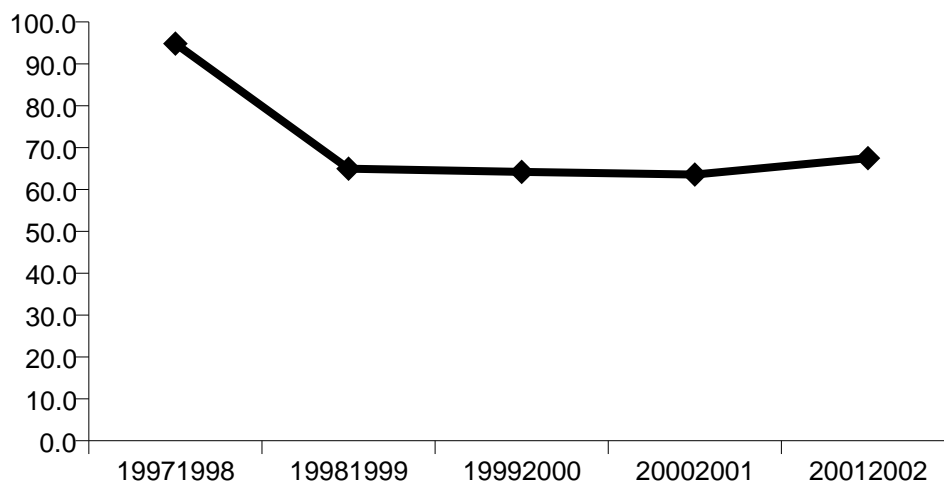
Recorded offences per 10,000 population and resolution rates

Years ended 30 June

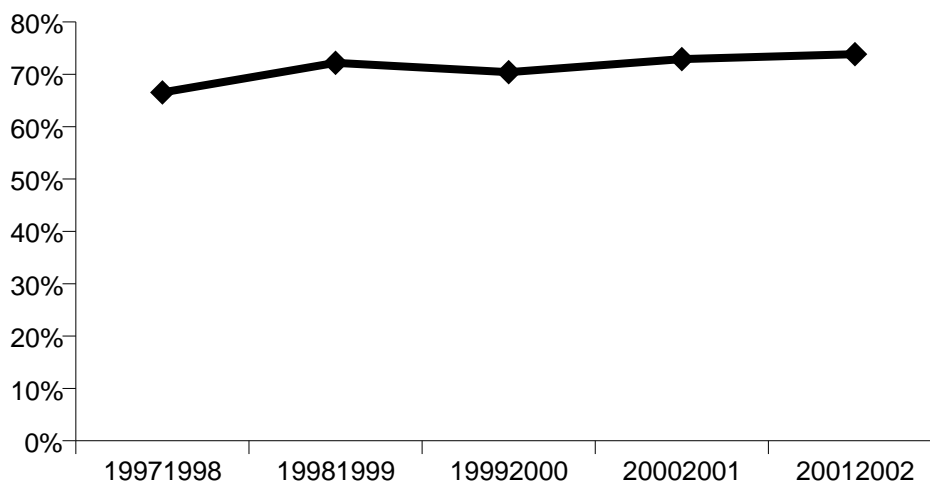
PROPERTY ABUSES (6000 series offences)

Fiscal year	Number of recorded offences	Annual percentage variation in recorded offences	Rate of recorded offences per 10,000 population	Annual percentage variation in rate of recorded offences per 10,000 population	Number of resolved offences	Resolution rate (percentage of offences resolved)	Annual percentage variation in resolution rate
1997/1998	1829		95		1217	66.5 %	
1998/1999	1248	-31.8 %	65	-31.5 %	901	72.2 %	8.5 %
1999/2000	1230	-1.4 %	64	-1.2 %	866	70.4 %	-2.5 %
2000/2001	1225	-0.4 %	64	-1.0 %	893	72.9 %	3.5 %
2001/2002	1308	6.8 %	67	6.2 %	966	73.9 %	1.3 %

Recorded offences per 10,000 population



Resolution rate
(percentage of recorded offences that are resolved)



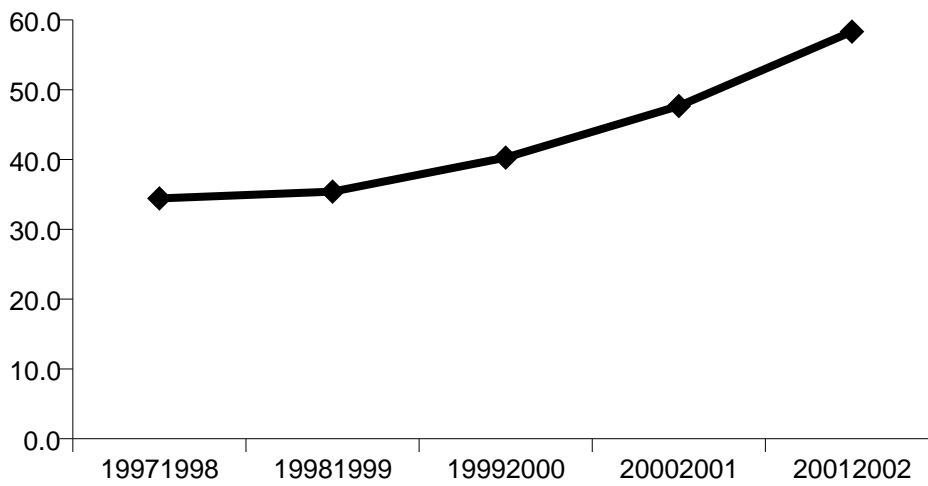
Recorded offences per 10,000 population and resolution rates

Years ended 30 June

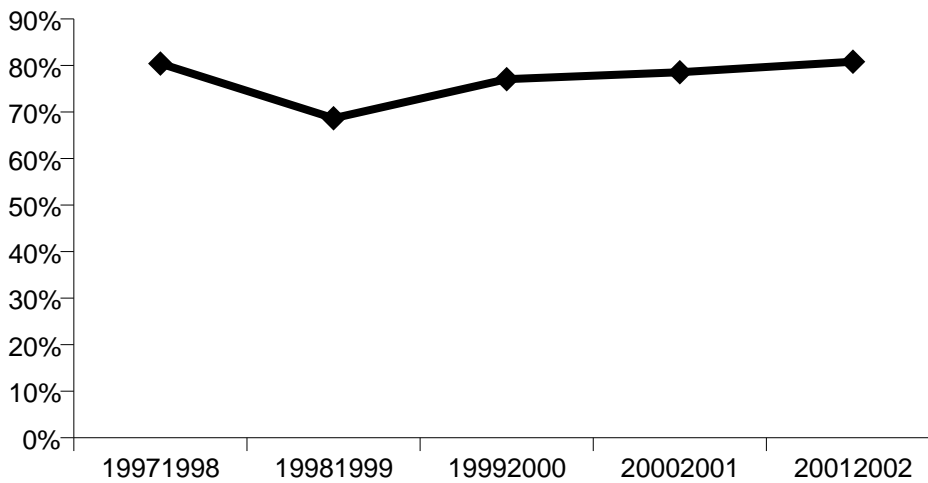
ADMINISTRATIVE (7000 series offences)

Fiscal year	Number of recorded offences	Annual percentage variation in recorded offences	Rate of recorded offences per 10,000 population	Annual percentage variation in rate of recorded offences per 10,000 population	Number of resolved offences	Resolution rate (percentage of offences resolved)	Annual percentage variation in resolution rate
1997/1998	664		34		534	80.4 %	
1998/1999	680	2.4 %	35	2.8 %	467	68.7 %	-14.6 %
1999/2000	772	13.5 %	40	13.8 %	595	77.1 %	12.2 %
2000/2001	919	19.0 %	48	18.3 %	722	78.6 %	1.9 %
2001/2002	1131	23.1 %	58	22.4 %	914	80.8 %	2.9 %

Recorded offences per 10,000 population



Resolution rate
(percentage of recorded offences that are resolved)



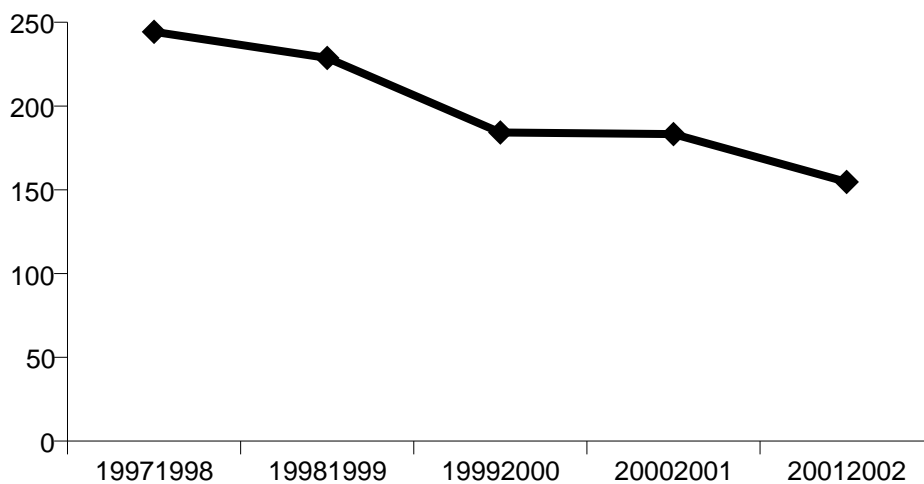
Recorded offences per 10,000 population and resolution rates

Years ended 30 June

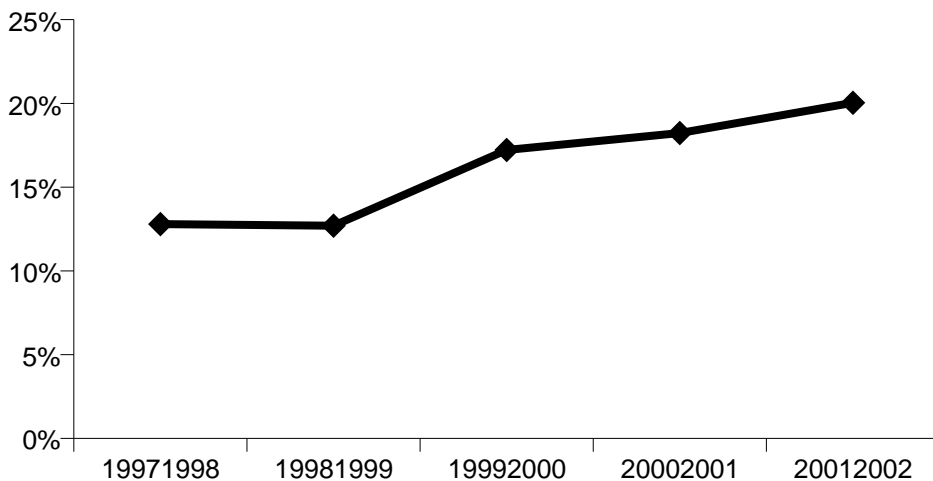
Burglary

Fiscal year	Number of recorded offences	Annual percentage variation in recorded offences	Rate of recorded offences per 10,000 population	Annual percentage variation in rate of recorded offences per 10,000 population	Number of resolved offences	Resolution rate (percentage of offences resolved)	Annual percentage variation in resolution rate
1997/1998	4713		244		603	12.8 %	
1998/1999	4393	-6.8 %	229	-6.4 %	558	12.7 %	-0.7 %
1999/2000	3531	-19.6 %	184	-19.4 %	608	17.2 %	35.6 %
2000/2001	3533	0.1 %	183	-0.5 %	644	18.2 %	5.9 %
2001/2002	2999	-15.1 %	155	-15.6 %	601	20.0 %	9.9 %

Recorded offences per 10,000 population



Resolution rate (percentage of recorded offences that are resolved)



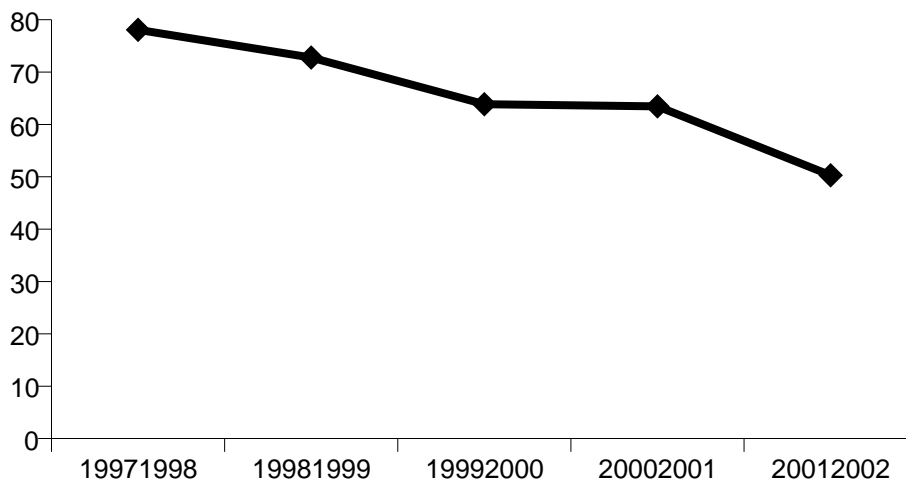
Recorded offences per 10,000 population and resolution rates

Years ended 30 June

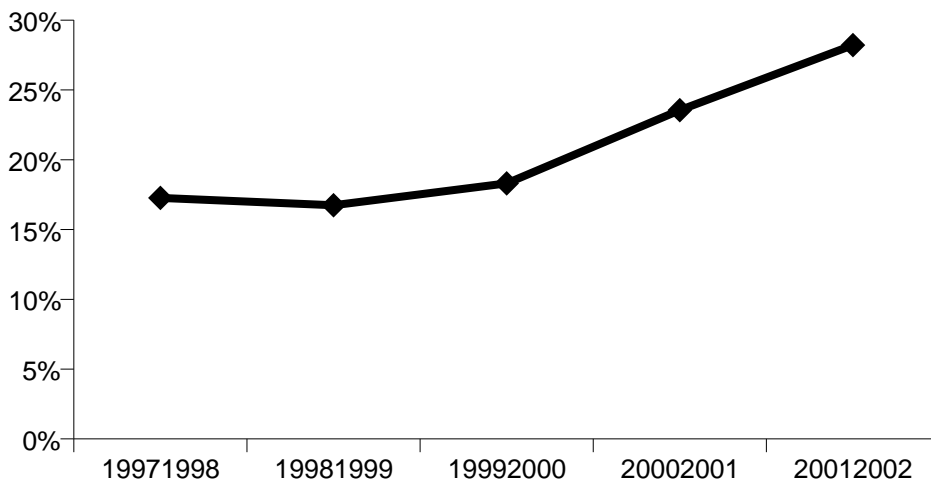
Car Conversion / Unlawful Taking

Fiscal year	Number of recorded offences	Annual percentage variation in recorded offences	Rate of recorded offences per 10,000 population	Annual percentage variation in rate of recorded offences per 10,000 population	Number of resolved offences	Resolution rate (percentage of offences resolved)	Annual percentage variation in resolution rate
1997/1998	1506		78		260	17.3 %	
1998/1999	1398	-7.2 %	73	-6.8 %	234	16.7 %	-3.0 %
1999/2000	1224	-12.4 %	64	-12.2 %	224	18.3 %	9.3 %
2000/2001	1223	-0.1 %	63	-0.7 %	288	23.5 %	28.7 %
2001/2002	975	-20.3 %	50	-20.7 %	275	28.2 %	19.8 %

Recorded offences per 10,000 population



Resolution rate (percentage of recorded offences that are resolved)



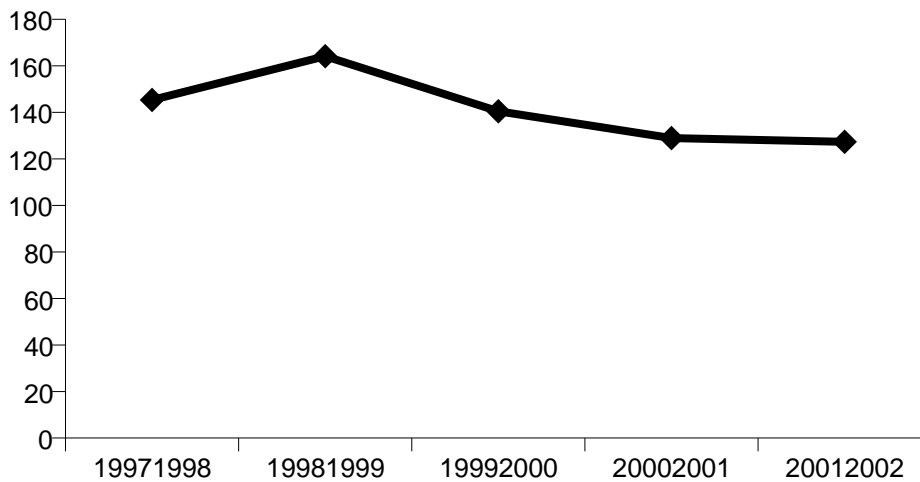
Recorded offences per 10,000 population and resolution rates

Years ended 30 June

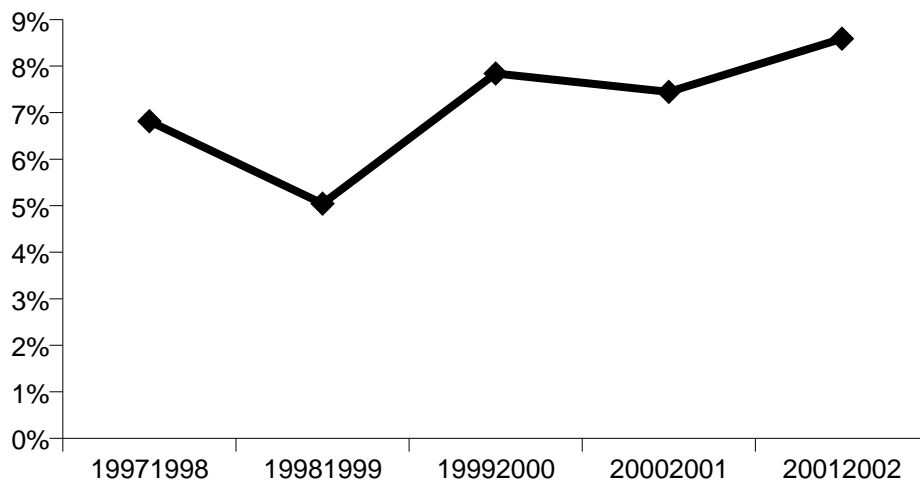
Theft ex Car

Fiscal year	Number of recorded offences	Annual percentage variation in recorded offences	Rate of recorded offences per 10,000 population	Annual percentage variation in rate of recorded offences per 10,000 population	Number of resolved offences	Resolution rate (percentage of offences resolved)	Annual percentage variation in resolution rate
1997/1998	2803		145		191	6.8 %	
1998/1999	3152	12.5 %	164	12.9 %	159	5.0 %	-26.0 %
1999/2000	2691	-14.6 %	140	-14.4 %	211	7.8 %	55.4 %
2000/2001	2485	-7.7 %	129	-8.2 %	185	7.4 %	-5.1 %
2001/2002	2468	-0.7 %	127	-1.3 %	212	8.6 %	15.4 %

Recorded offences per 10,000 population



Resolution rate (percentage of recorded offences that are resolved)



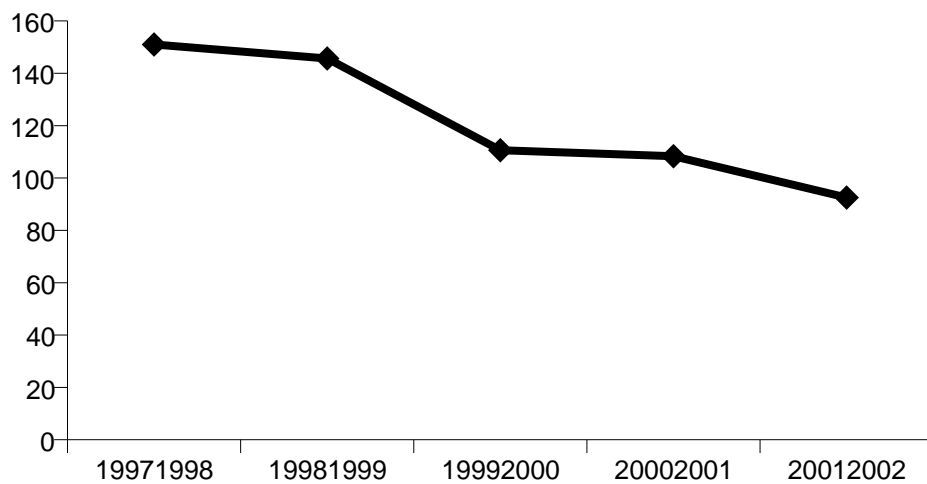
Recorded offences per 10,000 population and resolution rates

Years ended 30 June

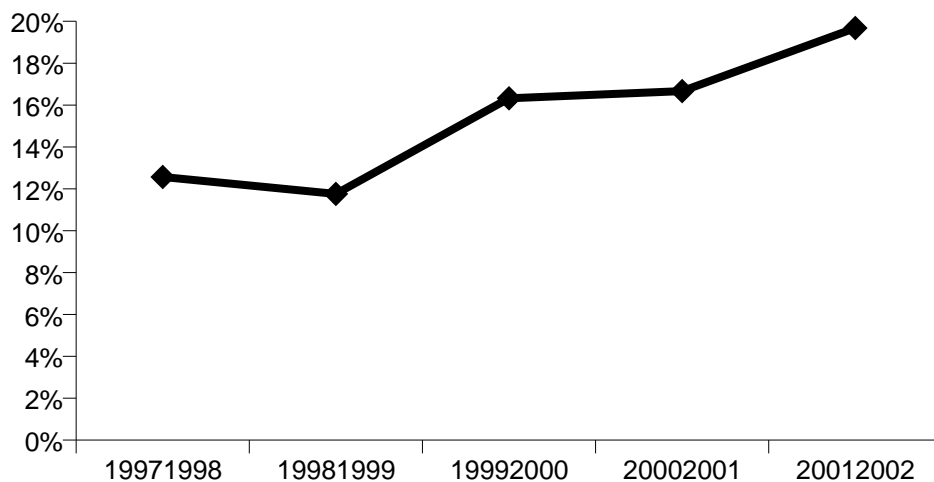
Burglary dwelling (4100 series offences with scene type of dwelling)

Fiscal year	Number of recorded offences	Annual percentage variation in recorded offences	Rate of recorded offences per 10,000 population	Annual percentage variation in rate of recorded offences per 10,000 population	Number of resolved offences	Resolution rate (percentage of offences resolved)	Annual percentage variation in resolution rate
1997/1998	2913		151		366	12.6 %	
1998/1999	2798	-3.9 %	146	-3.5 %	329	11.8 %	-6.4 %
1999/2000	2120	-24.2 %	111	-24.1 %	346	16.3 %	38.8 %
2000/2001	2088	-1.5 %	108	-2.1 %	348	16.7 %	2.1 %
2001/2002	1794	-14.1 %	93	-14.6 %	353	19.7 %	18.1 %

Recorded offences per 10,000 population



Resolution rate (percentage of recorded offences that are resolved)



Population data

	Estimated resident population:
Year	Eastern
1997/1998	192897
1998/1999	192087
1999/2000	191637
2000/2001	192757
2001/2002	193877

NOTES:

Population data is used in this release to calculate crime rates. These data are estimated resident population figures that have been obtained from Statistics New Zealand. The estimated resident population is an estimate of all people who usually live in that area at a given date. It is based on the census usually resident population count with adjustments for residents missed or counted more than once by the census (net census undercount), and for residents temporarily overseas on census night. The estimate for a given area excludes visitors from elsewhere in New Zealand and overseas.

The estimated population data has been taken at 30 June each fiscal year and has been calculated from data published by Statistics New Zealand for Territorial Local Authorities.

Subnational population estimates made by SNZ for the year to 30 June 2002 are not available for police districts. Accordingly, the population change that occurred during the year to 30 June 2001 has been projected forward to estimate the resident population in each police district for the year to 30 June 2002.

This process does result in a deficit of 10,000 people from national population estimate, which may be disproportionately distributed across the 12 police districts.