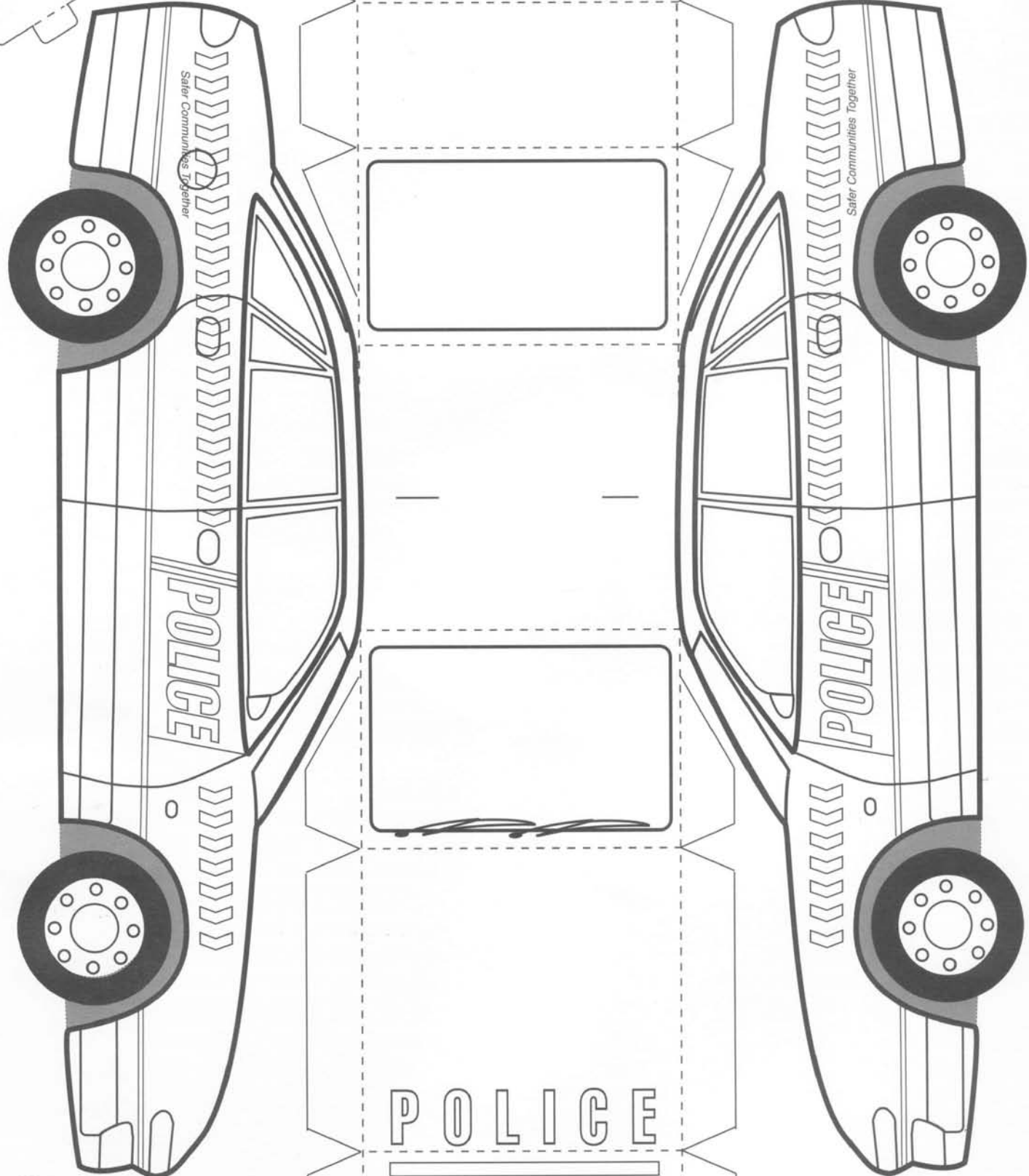
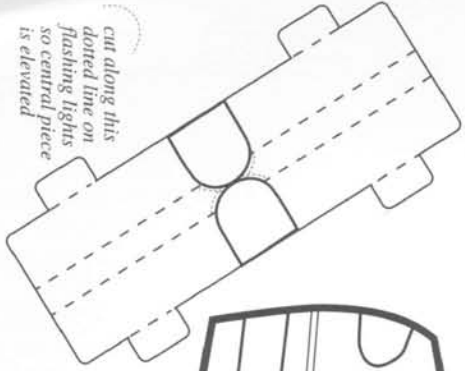


cut along this dotted line on flashing lights so central piece is elevated



**Instructions**

- 1 Colour in Police graphics.
- 2 Score along the dotted lines.
- 3 Cut out shape; fold sides of car down.
- 4 Bend center panel to fit to sides of car.
- 5 Fold tabs down; tape to inside of car.
- 6 Cut out light bars; fix in slots on roof.

